

# ALL YOU NEED TO KNOW ABOUT

## □ IN2IT access

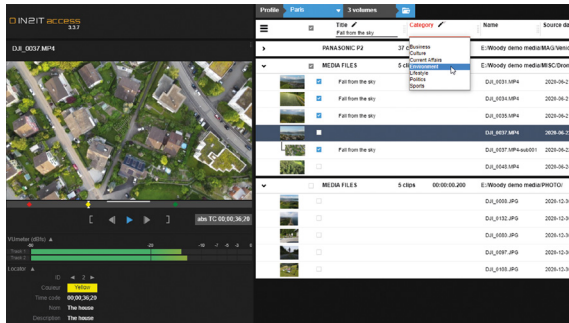
Your single Woody solution to manage all local and remote user ingest operations, to share footage and stories with the rest of your team.

### Discover IN2IT access

- > How it works
- > Workflow integration
- > Key features
- > IN2IT technology
- > Technical specifications
- > Get in touch!

woody

# How it works



## Everyone can ingest with full autonomy

IN2IT access has been designed for all users. It brings an unprecedented level of intuitiveness to file and camera ingest operations, thanks to a **highly configurable web-based UI**.

Journalists and ingest operators can **browse, preview and select** their content in a few clicks. **Technical decisions are automatically handled as background tasks**, thus avoiding mistakes.

Your **ingest is triggered in a few clicks**, making media and metadata available for everyone in the production environment.

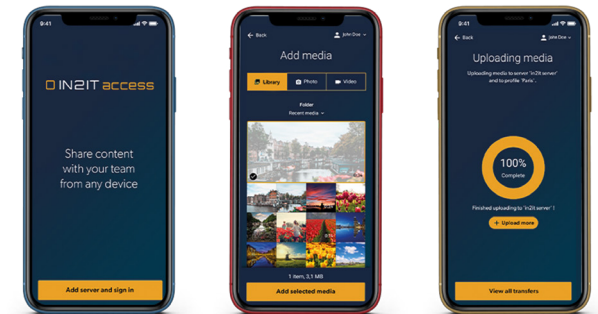
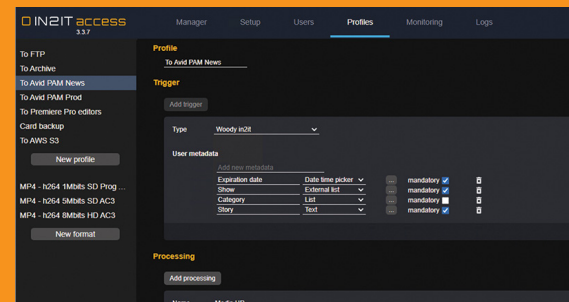
## Enrich and organize your content from step one

IN2IT access is **your workflow entry point**: a crucial step in which everything needs to be in proper working order before moving forward.

**Custom metadata, naming convention and organization rules** are defined by administrators using ingest profiles, and smoothly integrated in the user interface.

Content is easy to find in the MAM or on central storage. A **time saver** for editors, journalists, Media managers and support teams.

Your **workflow is under control**, and users feel it easy even under rush situations.



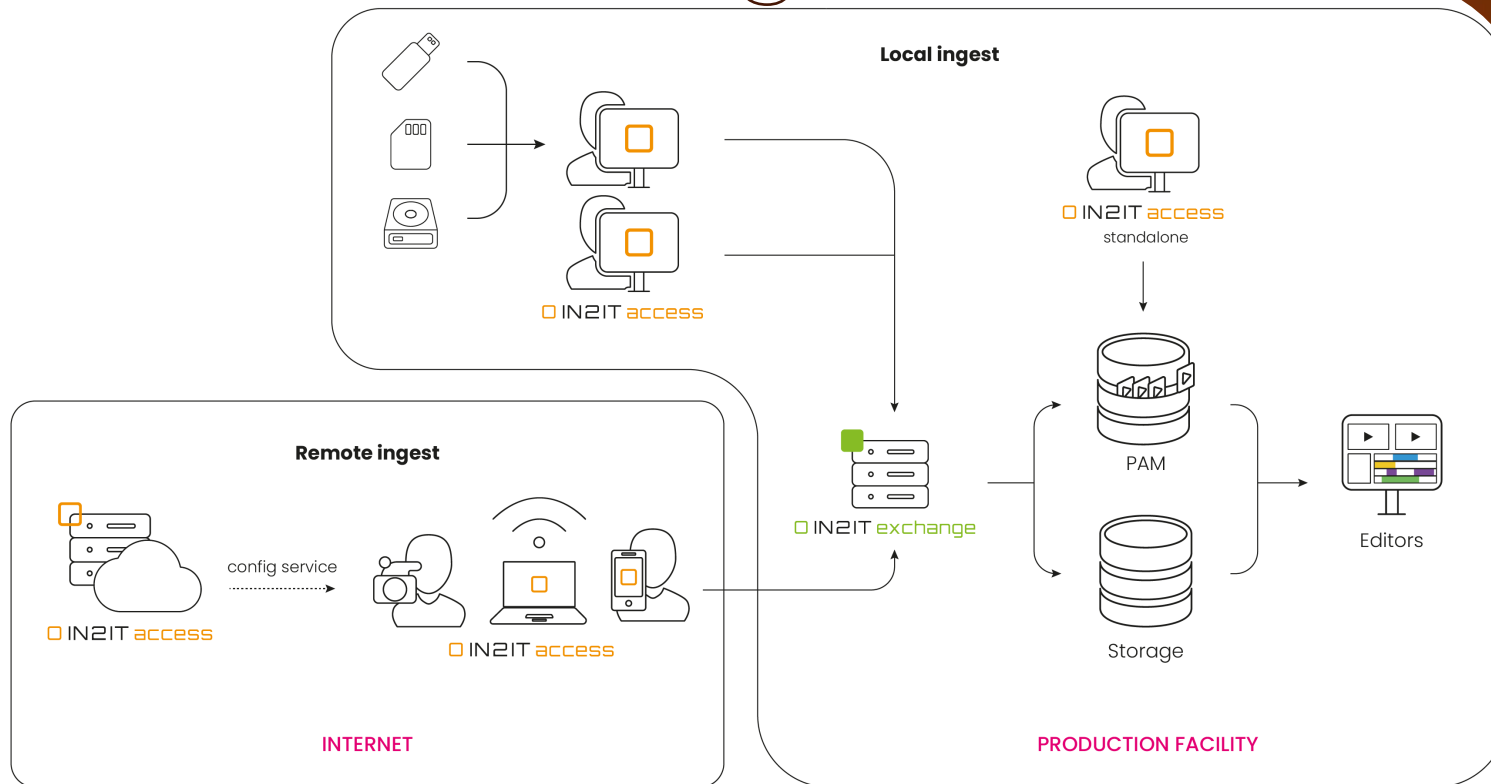
## Enable remote workflows in minutes

Regardless of whether you are working from home, from the field or in another office, your content needs to get on the air.

Use IN2IT access to **ingest from anywhere and on any device** including your iOS or Android smartphone.

Transfers to production environments (cloud or on premises) are accelerated, **devices and profiles are centrally managed by administrators**.

# Workflow integration



## AMAZING KEY FEATURES

- Ingest of camera cards and media files
- Frame-accurate preview
- Subclip creation
- Span clips support
- Audio track control
- Content enrichment with custom metadata
- Transfer acceleration for remote ingest
- Edit while ingest
- Mobile app on iOS and Android

# IN2IT

Discover what a user-centric, game changing technology can do for you.

All IN2IT solutions rely on a **flexible workflow engine** specifically designed to handle **media processing tasks**.

Seven years of development have resulted in **multiple connectors and workers for smooth integration** with industry-leading solutions.

IN2IT solutions are **easy to configure** and just as easy to use, empowering engineers to **build complex workflows in a short period of time**.

# Technical specifications

IN2IT access can be deployed as a standalone workstation for local ingest, or in a client-server architecture for local and remote ingest. Please refer to IN2IT exchange documentation to learn more about client-server deployment.

## Supports all commonly used sources

**Camera cards:** Panasonic P2, Sony XDCAM, Sony SxS, Canon XF, Sony ProDisc, GoPro, Drones

**Media files:** Video, audio and graphic files

## Recommended System

### IN2IT access standalone

- > 16 Gb RAM
- > CPU Intel Xeon E-2186G 3.8 5 GHz 6 cores or similar
- > SSD 512 Gb
- > NVidia Quadro P400
- > Ethernet 1 Gbps
- > Windows 10 Pro
- > Google Chrome

\* Required CPU resources may vary depending on source, target formats and transcoding options.

## Ingest modes and delivery protocols

**Processing modes:** Avid Media, A/V File, Card backup, metadata only

**MAM and cloud integrations:** Avid MediaCentral, Avid iNews, Dalet Galaxy, Grass Valley Stratus, Google Drive, Dropbox, Azure storage, Amazon S3, Busby

**Delivery protocols:** FTP, SFTP, FTPS, SMB, Aspera FASP, FileCatalyst, Signiant

## Ingest to all target formats

**Broadcast formats:** AVC-Intra, Avid proxy, DV, DVCPro HD, DNxHD, DNxHR, IMX, JFIF, XAVC Intra, XDCAM EX, XDCAM HD

**Custom formats:** h.264, h.265, Mpeg2, audio only

## IN2IT embedded workflow engine

- > Transcoding and rewrap
- > Metadata transformation and mapping
- > Advanced user management
- > Notifications

Find out more at <https://support.woody-technologies.com>

IN2IT is a brand of Woody Technologies, all rights reserved. All other trademarks are the property of their respective owners

# Get in touch!

**FOR FURTHER INFORMATION  
OR TO REQUEST A DEMO,  
PLEASE CONTACT OUR SALES TEAM**

**Aurélien Brelle**

+33 (0)6 10 82 11 87

**Paul Le Parc**

+33 (0)7 87 34 47 03

**Craig Risebury**

+1 (661) 645 0471 (United States)

**[sales@woody-technologies.com](mailto:sales@woody-technologies.com)**

**Do not hesitate to ask  
about our full range  
of intuitive solutions**

**IN2IT access**

Easily access and select your content on any device.

**IN2IT live**

Capture and share production and news faster and effortlessly.

**IN2IT social**

Create the best stories from newsworthy media content.

**IN2IT exchange**

Solve all ingest and outgest matters automatically.

**woody**

GEAR UP FOR TODAY'S NEWS WORLD